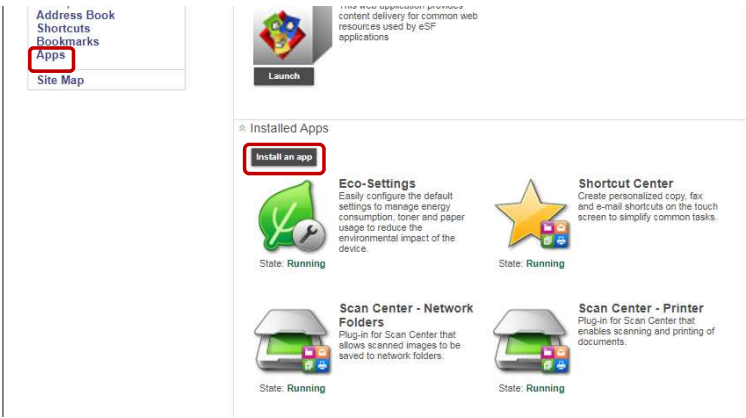
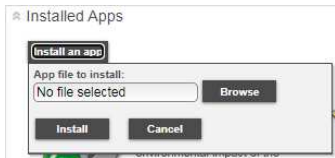


How to Install (Bar Code Discovery)

1. Download the Apps and store your PC.
2. Open a web browser, type machine's IP address in the address field.
3. Click “Apps”, and “Install an app”.



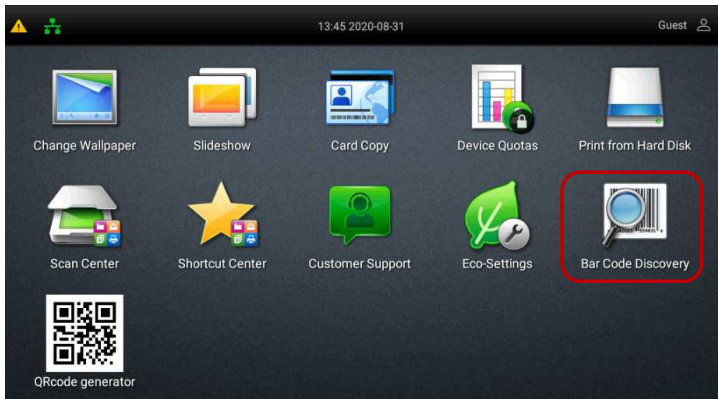
4. Click “Browse”, and select “barcodeDiscovery_xxxxx.flis” file then install.



- 5-1. When installation succeeds, the “Bar Code Discovery” icon automatically appears on the machine web page.

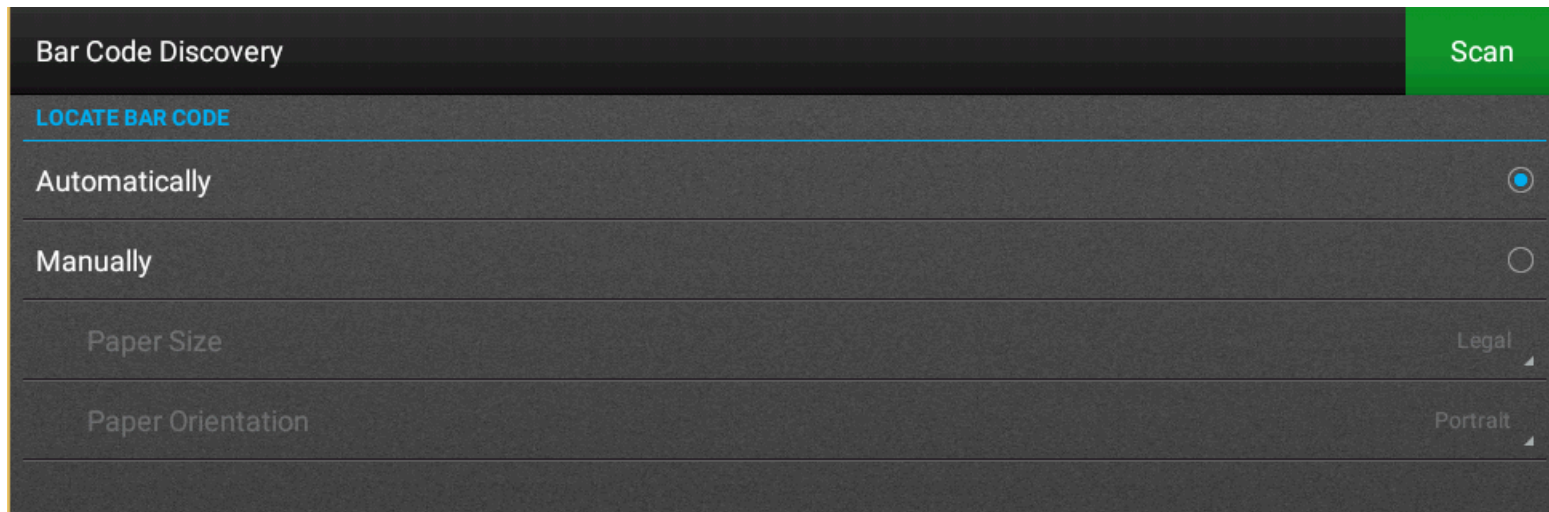


- 5-2. The “Bar Code Discovery” icon automatically appears on the Advanced Mode.



Bar Code Discovery Overview

Creates and manages templates for barcode to specify the location and type of barcode users frequently scan. These templates can be accessed by applications, such as Scan Center Premium or Solution Composer.



Bar Code Discovery Template Creation Screen

Users can create the barcode template by scanning the original including barcode automatically or manually.